

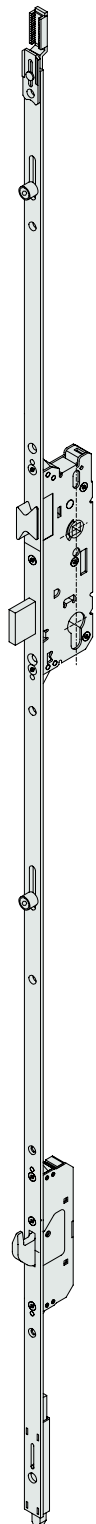
# FUHR Door Locks

## FUHR Stainless Steel "PLATINUM" Doorbolts

859  
Type 3



859  
Type 6

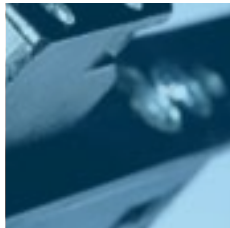


**Features**

- **Stainless steel**
- **100% corrosion resistant**
- **Trouble free operation**
- **10-year guarantee**
- **Manufactured by FUHR**

**Benefits**

- **Durability**
- **Reduced call-outs**
- **Excellent appearance**
- **Security**



In coastal areas, corrosion on plated products can be a problem but now, FUHR have provided the answer – the stainless steel doorbolt. The FUHR "PLATINUM" range of authentic stainless steel products – not simply a conventional doorbolt with a stainless steel faceplate.

In any location, the FUHR stainless steel lock will be durable and will look great. FUHR's lock mechanism is renowned for its reliability and ease of use, and now in stainless steel it is unbeatable. The "859" variants incorporate FUHR's unique "split spindle" mechanism, enabling both lever/lever and lever/pad operation, with standard handles.

For the fabricator, the assurance of reduced call-outs, for the consumer, peace of mind, and the best possible appearance. For PVC-u, aluminium, timber or the latest "composite" doors, FUHR stainless steel locks are available for single residential doors, or double opening French Doors.

**10 Year Guarantee**

On Stainless Steel "Platinum" products, FUHR are now able to offer their Ten Year guarantee in coastal sites, or in areas of industrial pollution previously excluded.

Door Security Add-ons  
See pages 87 – 89

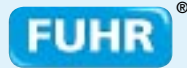


Door Knockers  
See pages 96 – 98

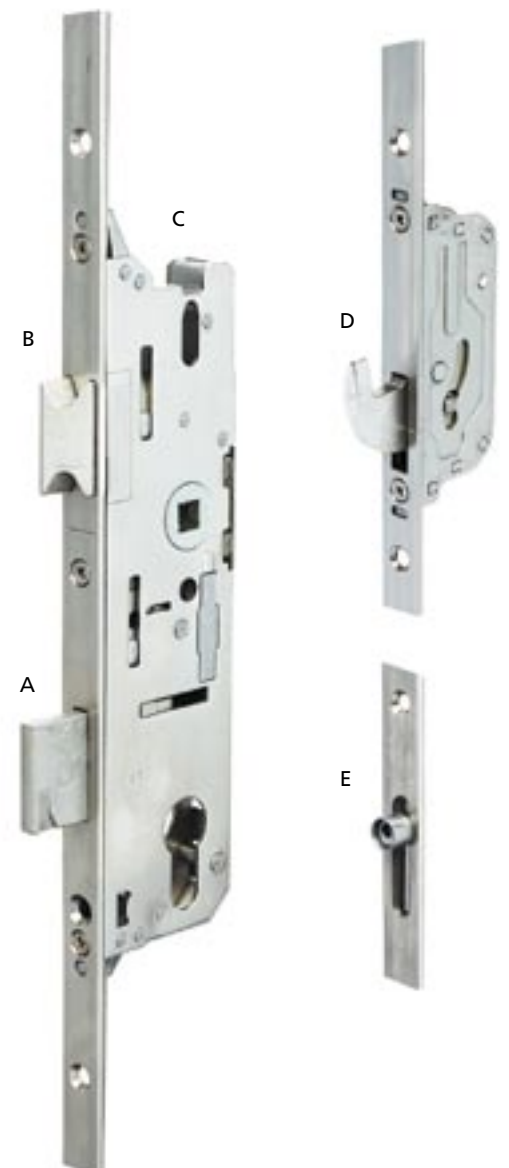


10 Year Guarantee





Description	Part No.	Box Qty
<b>One Piece Doorbolt</b>		
859 Type 3 Stainless Steel Doorbolt 35mm 2 Hooks / 2 Rollers	42.8859.92.353	5
<b>Two Piece</b>		
859 Type 6 Stainless Steel Doorbolt 35mm Backset		
1 Hook, 2 Rollers and Shoot Bolt	42.8859.92.365	5
859 Type 6 Stainless Steel Doorbolt 30mm Backset		
1 Hook, 2 Rollers and Shoot Bolt	42.8859.92.305	5
<b>Centre Section</b>		
859R Stainless Steel Centre Section C/W Shoe Connectors 35mm	42.8859.92.356	5
859R Stainless Steel Centre Section C/W Shoe Connectors 30mm	42.8859.92.306	5
<b>Extension</b>		
Stainless Steel Top Shoot Bolt Hook / Shoot	42.8600.93.665	20
Stainless Steel Top Shoot Bolt Extension for 856V	42.8600.93.610	10
Stainless Steel Bottom Shoot Bolt Extension for 856V	42.8600.93.660	10
<b>Slave</b>		
856V Stainless Steel Slave Doorbolt 35mm	42.8857.92.357	5
856V Stainless Steel Slave Doorbolt 30mm	42.8857.92.305	5



- A. Deadbolt** – Substantial stainless steel deadbolt throws 20mm when locked.
- B. Latch** – The latch is simple to reverse to suit both left and right hand applications.
- C. Lockcase** – Standard dimensions with single spindle entry enable the use of standard handles for all applications. Just 18mm clearance required behind backset. (e.g. 35mm backset, 53mm lockcase depth).
- D. Hook bolts** – FUHR hooks are heavy duty, designed to offer excellent security (extending 20mm) simultaneously with smooth operation. The tapered design both eases the locking of the door and generates the required compression for weather resistance.
- E. Rollers** – Free running, adjustable roller cams aid the initial closing of the door, and provide controlled compression.
- F. Split spindle** – FUHR’s unique split spindle mechanism, enables both lever/lever and lever/pad operation with standard handles, on 859 variants.

