

Highline Window Control Systems

- A full range of manual and electrically operated systems for ventilation and smoke control.
- Ideal for control of high level and inaccessible windows.
- Can be fitted to PVC-u, aluminium, timber and steel windows.



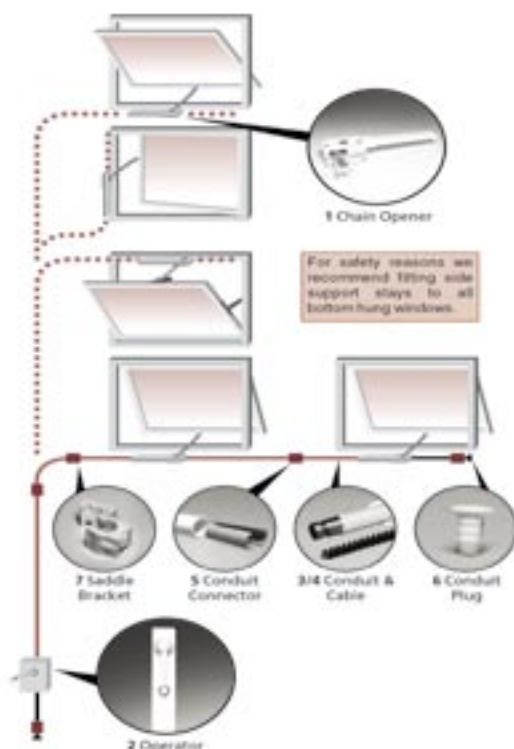
Carl F Specification Systems

Tell us about your project and we will determine the hardware you require. Easy ordering and no stocking problems.

When ordering we need to know: -

- **Do you require standard opening, ventilation or a smoke control system?**
- **Do you require manual or electrical operation?**
- **Window information:** Size, material, hinge type and positions – see illustrations.
- **Required opening**
- **Window location:** Number of openers, Distance of operating handle to opening light.
- **A simple sketch drawing will help us to identify your requirements**

Manual Operating System



On receipt of your project details, our Specification Team will fax back or email a full breakdown of part numbers, quantities and prices.

Three versions available:

Manual – lever wind up

Electronically motorised –
smoke control option available

Manual – cam folding openers

The electric motor version is available to suit most applications. Operated by push button or electric timer. This can also include a smoke control unit, which will open automatically in the event of a fire. A rain sensor option is available for automatic opening/closing. A thermostat option is available for automatic ventilation.

Manual wind up is available in two versions, lever or hand held pole version. The lever wind up is a wall-mounted arrangement. The hand held pole simply fits into the screw jack allowing for easy opening and closing.

The manual ring pull version is used in conjunction with folding cam openers and can be linked using a series of bars.

Window positions

