

Carl F Cylinders



A wide range of cylinders, available in many types and sizes. The cylinder is anti drill, scratch resistant and available in satin nickel and polished brass finishes.

The cylinders have been successfully tested to BSEN1303:2005. The test report shows that the cylinders passed all relevant aspects of the test and the cylinder is classified as follows:

| Category of Use | Durability | Door Mass | Fire Resistance | Safety | Corrosion & Temperature | Key related security | Attack Resistance |
|-----------------|------------|-----------|-----------------|--------|-------------------------|----------------------|-------------------|
| 1 | 6 | n/a | n/a | n/a | C | 5 | 2 |

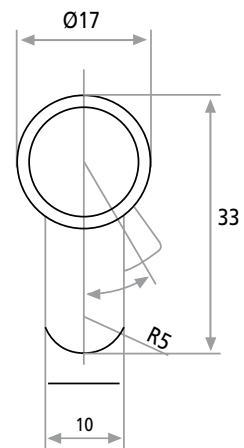
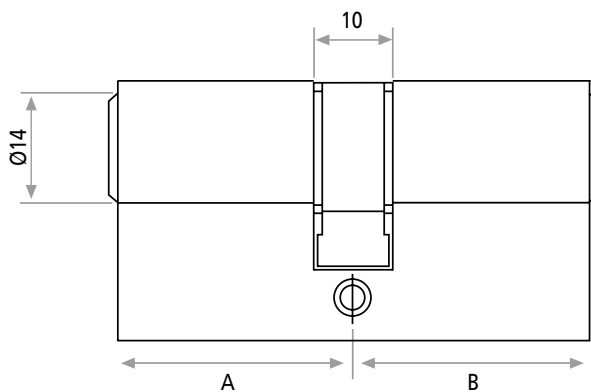
n/a = not assessed

When used with cylinder protection

Carl F cylinders are available in standard, keyed alike, key alike pairs, knob operated and half cylinders.



- Brass or nickel finish
- Manufactured to ISO 9001: 2000
- Anti drill
- 6 pin
- 3 keys per cylinder
- Tested against EN1303:2005



| Description | Satin Nickel Part No. | Polished Brass Part No. | Box Qty |
|-------------|-----------------------|-------------------------|---------|
|-------------|-----------------------|-------------------------|---------|

Standard Double Entry

| | | | |
|-------------|----------|----------|----|
| 6 Pin 35/35 | CY35/35N | CY35/35B | 10 |
| 6 Pin 35/40 | CY35/40N | CY35/40B | 10 |
| 6 Pin 35/45 | CY35/45N | CY35/45B | 10 |
| 6 Pin 40/40 | CY40/40N | CY40/40B | 10 |
| 6 Pin 40/45 | CY40/45N | CY40/45B | 10 |
| 6 Pin 40/50 | CY40/50N | CY40/50B | 10 |
| 6 Pin 40/55 | CY40/55N | CY40/55B | 10 |
| 6 Pin 45/45 | CY45/45N | CY45/45B | 10 |
| 6 Pin 45/50 | CY45/50N | CY45/50B | 10 |
| 6 Pin 45/55 | CY45/55N | CY45/55B | 10 |

Key Alike Pairs

| | | | |
|-------------|--------------|--------------|---|
| 6 Pin 35/35 | CY35/35NPAIR | CY35/35BPAIR | 5 |
| 6 Pin 35/40 | CY35/40NPAIR | CY35/40BPAIR | 5 |
| 6 Pin 35/45 | CY35/45NPAIR | CY35/45BPAIR | 5 |
| 6 Pin 35/55 | CY35/55NPAIR | CY35/55BPAIR | 5 |
| 6 Pin 40/40 | CY40/40NPAIR | CY40/40BPAIR | 5 |
| 6 Pin 40/45 | CY40/45NPAIR | CY40/45BPAIR | 5 |
| 6 Pin 40/50 | CY40/50NPAIR | CY40/50BPAIR | 5 |
| 6 Pin 40/55 | CY40/55NPAIR | CY40/55BPAIR | 5 |
| 6 Pin 45/45 | CY45/45NPAIR | CY45/45BPAIR | 5 |
| 6 Pin 45/50 | CY45/50NPAIR | CY45/50BPAIR | 5 |
| 6 Pin 45/55 | CY45/35NPAIR | CY45/55BPAIR | 5 |

| Description | Satin Nickel Part No. | Polished Brass Part No. | Box Qty |
|-------------|-----------------------|-------------------------|---------|
|-------------|-----------------------|-------------------------|---------|

Knob Cylinder

| | | | |
|-------------|-----------|-----------|----|
| 6 Pin 35/40 | CYK35/40N | CYK35/40B | 10 |
| 6 Pin 40/35 | CYK40/35N | CYK40/35B | 10 |
| 6 Pin 40/40 | CYK40/40N | CYK40/40B | 10 |
| 6 Pin 40/45 | CYK40/45N | CYK40/45B | 10 |
| 6 Pin 40/50 | CYK40/50N | CYK40/50B | 10 |
| 6 Pin 45/45 | CYK45/45N | CYK45/45B | 10 |
| 6 Pin 45/50 | CYK45/50N | CYK45/50B | 10 |
| 6 Pin 45/55 | CYK45/55N | CYK45/55B | 10 |

Key Alike

| | | | |
|-------------|------------|------------|----|
| 6 Pin 35/35 | CY35/35NKA | CY35/35BKA | 10 |
| 6 Pin 35/40 | CY35/40NKA | CY35/40BKA | 10 |
| 6 Pin 35/45 | CY35/45NKA | CY35/45BKA | 10 |
| 6 Pin 35/55 | CY35/55NKA | CY35/55BKA | 10 |
| 6 Pin 40/40 | CY40/40NKA | CY40/40BKA | 10 |
| 6 Pin 40/45 | CY40/45NKA | CY40/45BKA | 10 |
| 6 Pin 40/50 | CY40/50NKA | CY40/50BKA | 10 |
| 6 Pin 40/55 | CY40/55NKA | CY40/55BKA | 10 |
| 6 Pin 45/45 | CY45/45NKA | CY45/45BKA | 10 |
| 6 Pin 45/50 | CY45/50NKA | CY45/50BKA | 10 |

Half Cylinders

| | | | |
|-------------|----------|----------|----|
| 6 Pin 45/10 | CY45/10N | CY45/10B | 10 |
| 6 Pin 50/10 | CY50/10N | CY50/10B | 10 |